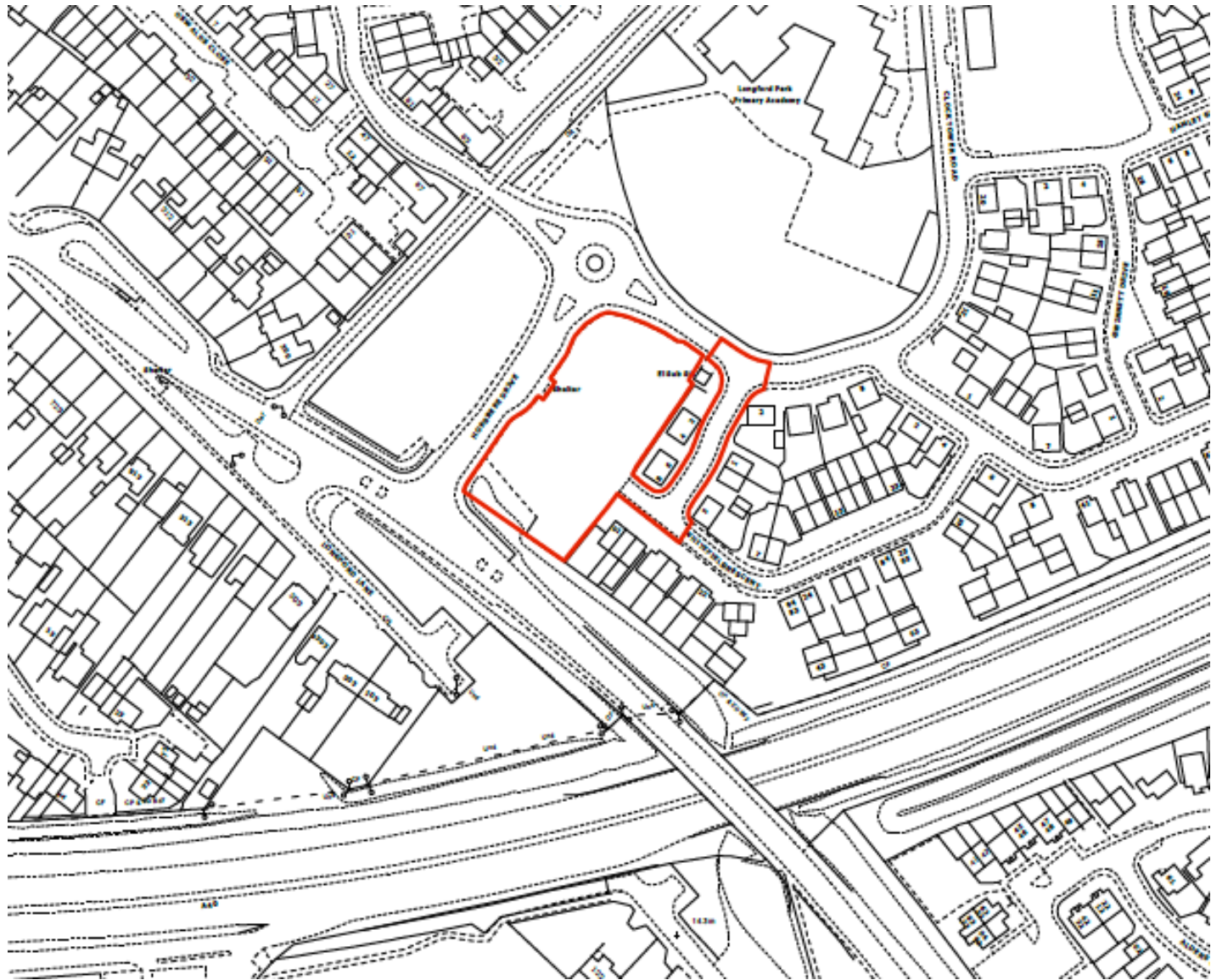


**19/01098/FUL**

Construction of two apartment blocks comprising 33 dwellings and associated parking and landscaping.

Land To The East Of Horsbere Drive  
Longford  
GL2 9BY





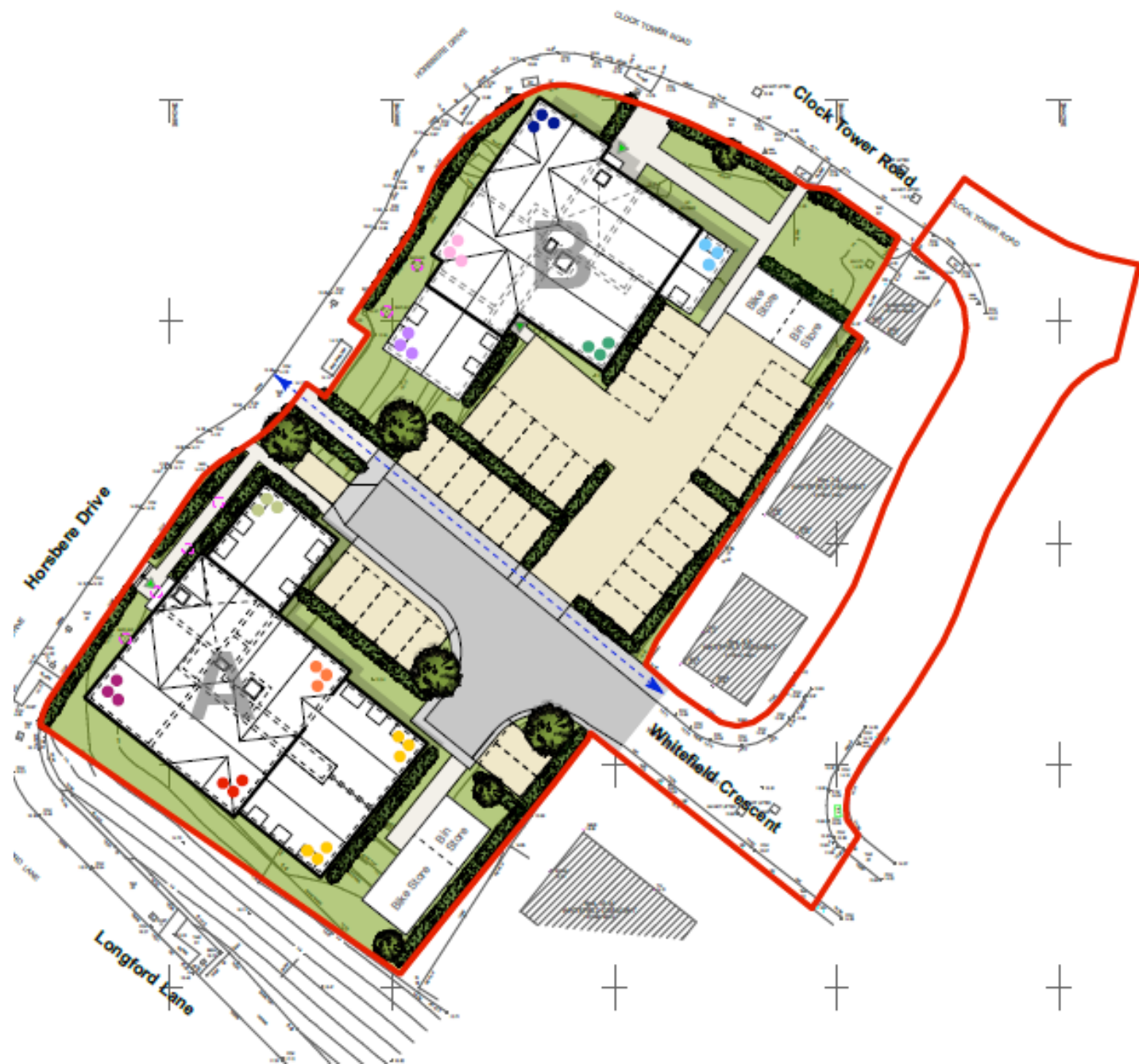
Aerial View



Application Site



Site Layout Plan



## Building A – Proposed Elevations



Elevation - Horsbore Drive  
Block A



Elevation - Longford Lane  
Block A



Elevation - Whitefield Crescent  
Block A



Elevation - Courtyard  
Block A

## Building B – Proposed Elevations



Elevation - Clock Tower Road  
Block B



Elevation - Horsbore Drive  
Block B



Elevation - Courtyard  
Block B



Elevation - Whitefield Crescent  
Block B

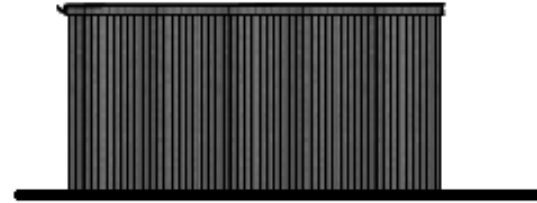
Street Scene Plan



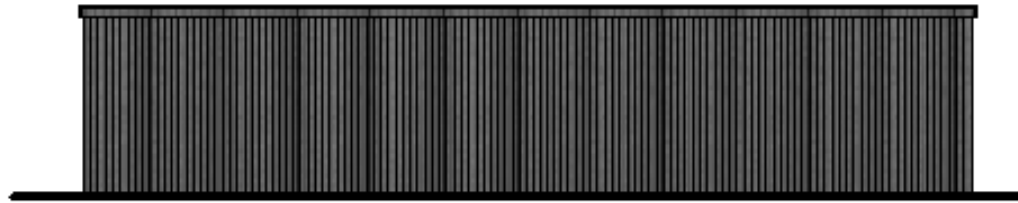
## Building A – Proposed Cycle and Bin Store



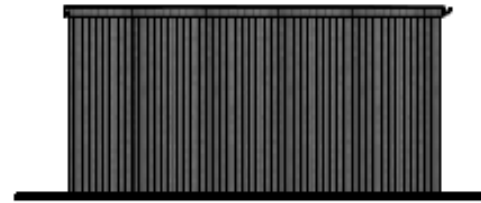
Front Elevation



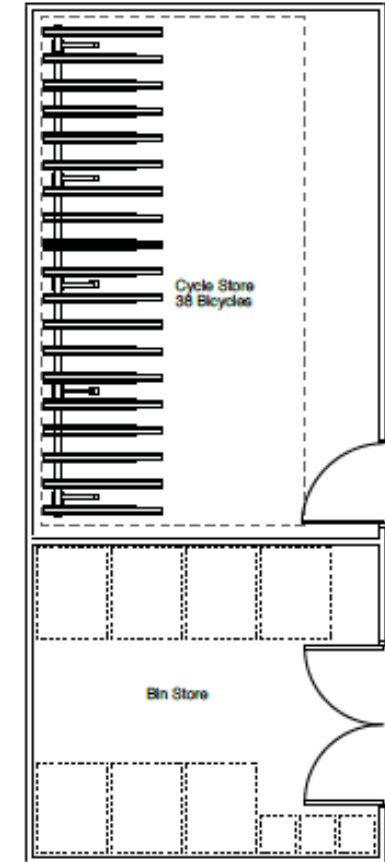
Side Elevation



Rear Elevation



Side Elevation

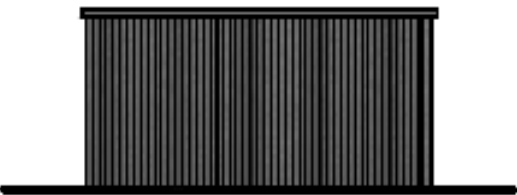




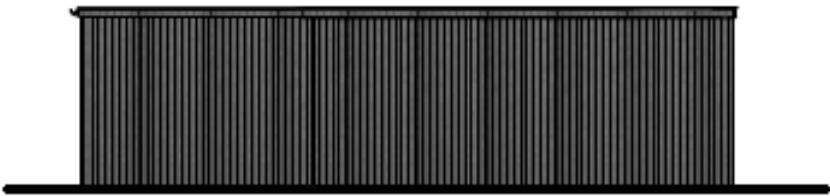
# Building B – Proposed Cycle and Bin Store



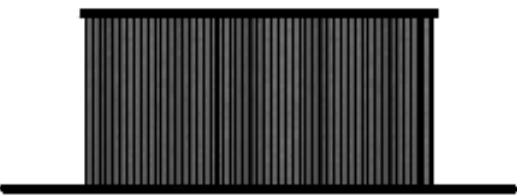
Front Elevation



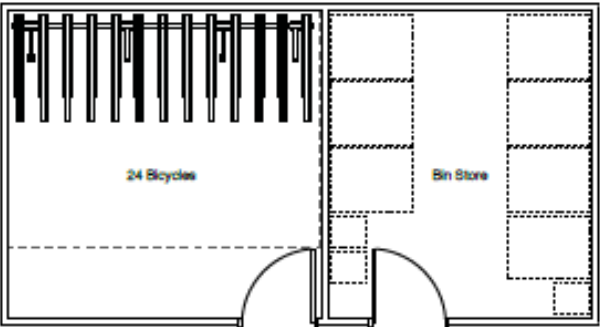
Side Elevation



Rear Elevation



Side Elevation



Site Photographs





Site Photographs





Site Photographs





Site Photographs

